



# 2021 West Virginia Perinatal Summit

October 14-15, 2021

| Stonewall Resort

| Roanoke, West Virginia



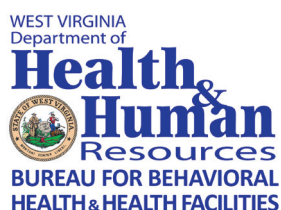
**CAMC  
Institute**

Jointly sponsored educational activity  
provided through CAMC Institute.





This event is provided by the West Virginia Perinatal Partnership. It is made possible through grants from the West Virginia Higher Education Policy Commission, Division of Health Sciences; West Virginia Department of Health and Human Resources Bureau for Behavioral Health and Bureau for Public Health, Office of Maternal, Child and Family Health, and through support from partners.



# 2021 West Virginia Perinatal Summit

October 14 -15, 2021

Stonewall Resort  
Roanoke, West Virginia

## SUMMIT OVERVIEW

The program is designed to bring professionals from multiple disciplines together to discuss perinatal and child health issues. Local and nationally recognized faculty will encourage participants to consider new research, best practices, collaborative and innovative strategies in perinatal health policy and education. After completing this course, participants will be able to:

- Describe best practices in perinatal, neonatal and gynecologic health;
- Identify quality improvement strategies to promote better health outcomes for pregnant women and newborns;
- Discuss barriers and opportunities for improving access to care for women and infants in West Virginia;
- Outline policies and practices that lead to improvements in the quality and delivery of health care in West Virginia;
- Engage in collegial conversations about what is appropriate and necessary treatment for women and infants; and
- Build alliances and discuss initiatives to strengthen the West Virginia Perinatal Partnership.



JOINTLY ACCREDITED PROVIDER™  
INTERPROFESSIONAL CONTINUING EDUCATION

## ACCREDITATION STATEMENT

In support of improving patient care, this activity has been planned and implemented by WV Perinatal Partnership and CAMC Health Education and Research Institute (CHERI). CHERI is jointly accredited by the Accreditation Council for Continuing Medical Education (ACCME), the Accreditation Council for Pharmacy Education (ACPE), and the American Nurses Credentialing Center (ANCC), to provide continuing education for the healthcare team.

**Physicians** – The CAMC Health Education and Research Institute designates this live activity for a maximum of 16 hours for AMA PRA Category I Credit(s)™. Physicians should only claim credit commensurate with the extent of their participation in the activity.

**Nurses** – The CAMC Health Education and Research Institute is an approved provider of continuing nursing education by the American Nurses Credentialing Center's Commission on Accreditation. This offering has been approved for 16 contact hours (JA0026-22-21-380) Expiration date is 2 years from the course date.

**Social Work** – CAMC Health Education and Research Institute is an approved provider of continuing education by the West Virginia Board of Social Work Examiners. This program has been approved for 16 hour of social work credit. Approval number #490045.

## DISCLOSURE POLICY

It is the policy of the CAMC Health Education and Research Institute that any faculty (speaker) who makes a presentation at a program designated for AMA Physician's Recognition Award (PRA) Category I or II credit must disclose any financial interest or other relationship (i.e. spouse partner grants, research support, consultant, honoraria) that faculty member has with the manufacturer(s) of any commercial product(s) that may be discussed in the educational presentation.

Program Planning Committee Members must also disclose any financial interest or relationship with the commercial industry that may influence their participation in this conference. All faculty and planning committee members have disclosed that no relationships exist.

**Information concerning faculty, speaker and planning committee relationships will be disclosed to the audience from the podium. The presenters have disclosed that no financial relationships exist.**

## COMFORT ZONE

Though every effort is made to have a comfortable temperature in the meeting rooms, we realize everyone's comfort zone is different. Therefore, please bring a sweater or light jacket in case the room is too cool for your comfort. As a COVID-19 safety precaution, we will be dining outdoors so please dress for your comfort.

## LCERPS

Application for Lactation Continuing Education Recognition Points (LCERPS) has been submitted to the International Board of Lactation Consultant Examiners.

## INTERNET ACCESS

Complimentary Wi-Fi is available throughout the conference center.

## NURSING MOTHERS

A lactation room is available for the convenience of conference attendees and exhibitors. Please ask at the conference registration desk for location and key access.





# 2021

West Virginia  
Perinatal Summit

# AGENDA

**Thursday, October 14, 2021**

**7:30 - 8:00 am**

**Ballroom Foyer, Birch and Summersville Room**

**Registration, Breakfast, and Vendor Exhibits**

**8:00 – 8:05 am**

**Stonewall Ballroom**

**Welcome Remarks**

**Amy N. Tolliver, MS**

Executive Director  
WV Perinatal Partnership  
Charleston, WV

**8:05 – 8:45 am**

**Perinatal State of the State – How are We  
Doing in WV?**

**Kimberly Farry, MD**

Board Chair and Chairperson Central Advisory Council  
WV Perinatal Partnership  
WVU Medicine OB/GYN  
Buckhannon, WV

**8:45 – 9:15 am**

**The Impact of Emerging Infections on  
Women and Infants in WV**

This presentation will discuss the impact of communicable diseases on women of childbearing age, pregnant women, and infants in WV. HIV, COVID-19 and Hepatitis will be explored.

**Amy Atkins, MPA**

Deputy Commissioner  
Bureau for Public Health, WV DHHR  
Charleston, WV

**Shannon McBee, MPH, CHES**

State Epidemiologist  
Commissioner's Office  
Bureau for Public Health, WV DHHR  
Charleston, WV

## Thursday, October 14, 2021 *continued*

9:15 – 10:00 am

### Impact of COVID-19 on Infants

This presentation will discuss the impact of the global pandemic on the health of infants in the mountain state and nation.

**Balaji Govindaswami, MD, MPH**

Chief, Division of Neonatology  
Director, Neonatal Intensive Care Unit  
Professor and Endowed Chair, Pediatric Preventative and  
Addiction Medicine  
Professor, Clinical and Translational Science  
Associate Chair, Research, Marshall Pediatrics  
Joan C. Edwards School of Medicine  
Marshall University  
Huntington, WV

10:00 – 10:20 am

Ballroom Foyer, Birch and Summersville Room

### Break - Exhibit Visits

10:20 – 11:05 am

Stonewall Ballroom

### Improving Access to Doula Care (Virtual)

The presence of a support person during labor has been shown to decrease cesarean section rates and postpartum support increases breastfeeding rates. As a result, doula care is increasingly recognized as an important component of maternity care. Accessibility to this valuable resource has improved the health and wellbeing of mothers and infants. This presentation will explore how we can effectively add the doula to our obstetrical care team.

**Ngozi Tibbs, MPH, IBCLC, LCCE, CHC, PN1**

Maternal and Child Health Educator  
Lactation Consultant  
Healthy Start  
Pittsburgh, PA

11:05 – 11:50 am

### The Sacred Hour: Uninterrupted Skin to Skin Immediately After Birth

How a baby is welcomed into the world matters! Mother's chest is where newborns are usually most physiologically stable, where they feel most safe and secure, and where they can instinctively find the breast without assistance. Because separation from mother induces high levels of stress in the newborn with short and long-term consequences, practical ways to achieve uninterrupted skin-to-skin contact between stable newborns and mothers immediately after both vaginal and cesarean births will be discussed.

**Raylene Phillips, MD, MA, FAAP, FABM, IBCLC**

President, Association for Prenatal & Perinatal Psychology &  
Health  
Medical Director of Neonatal Services and Pediatric Department  
Chair  
Neonatology Attending, Associate Professor of Pediatrics  
Loma Linda University Medical Center - Murrieta  
Director, Breastfeeding/Lactation  
Loma Linda University Children's Hospital  
Loma Linda, CA

11:50 am – 12:45 pm

Terrace Lawn

### Lunch, Exhibit Visitation and Networking

Lunch will be served under the tent on the Terrace Lawn



12:45 - 1:45 pm  
Stonewall Ballroom

## WV Initiatives to Address Substance Use in Pregnancy

This session includes an overview of the prevalence of maternal substance use and NAS in WV and a discussion of what we are learning from programs developed to address the problem.

### Infants with Prenatal Substance Use Exposure and Neonatal Abstinence Syndrome (NAS) – Updates and Trends from 2016 – 2021 (Virtual)

**Amna Umer, PhD, MPH, BDS**

Associate Professor  
Department of Pediatrics  
WVU School of Medicine  
Morgantown, WV

### Drug Free Moms and Babies Project Update (Virtual)

**Christa Lilly, PhD**

Associate Professor  
Department of Epidemiology and Biostatistics  
WVU School of Public Health  
Morgantown, WV

### ESC at CAMC - Eat, Sleep, and Console Approach to Care

**Stefan R. Maxwell, MD, A.B.P. FAAP**

Clinical Assistant Professor Pediatrics  
WVU School of Medicine  
WV School of Osteopathic Medicine  
Pediatrix Medical Group  
Director Neonatal Services  
Charleston Area Medical Center  
Charleston, WV

1:45 – 2:30 pm

## Marijuana: Effects on the Fetus and Newborn (Virtual)

This session discusses the history of marijuana use and its effects on pregnancy, the fetus, and the newborn. Legal issues are presented and controversies are explored.

**Gilbert I. Martin, MD, FAAP**

Medical Director Emeritus, NICU  
Professor of Pediatrics and Neonatology  
Loma Linda Children's Hospital  
Loma Linda, CA

2:30 – 3:00 pm

Ballroom Foyer, Birch and Summersville Room

## Refreshment Break, Exhibit Visitation and Networking

3:00 – 4:30 pm

Stonewall Ballroom

## Infant and Maternal Mortality Panel Discussion

Expert panel members will explore the leading causes of infant and maternal mortality in WV, discuss trends in perinatal outcomes, review current initiatives, and explore recommendations for changes in programs, policies and for evidence-based interventions. An interactive Q & A to follow presentations.

**Moderator:**

**Anne Williams, RN, BSN, MS-HCA**

Nurse Consultant  
Infant and Maternal Mortality Review  
WV Perinatal Partnership  
Bradenton, FL

## Infant & Maternal Mortality Impact: A Dive into the Data

**James Marcus Arnaez, MPH, PhD**

Lead Epidemiologist  
WV Health Statistics Center  
Bureau for Public Health, WV DHHR  
Charleston, WV

## Leading Causes of Maternal and Infant Mortality and Racial Disparities

### Balaji Govindaswami, MD, MPH

Chief, Division of Neonatology  
Director, Neonatal Intensive Care Unit  
Professor and Endowed Chair, Pediatric Preventative and  
Addiction Medicine  
Professor, Clinical and Translational Science  
Associate Chair, Research, Marshall Pediatrics  
Joan C. Edwards School of Medicine  
Marshall University  
Huntington, WV

## Relationships Between Maternal and Infant Outcomes

### Annelee Boyle, MD, FACOG

Associate Professor  
Director of Maternal-Fetal Medicine and Labor & Delivery  
Services  
Associate Residency Program Director  
WVU School of Medicine  
Morgantown, WV

## Impact of Congenital Anomalies and Genetic Defects on Infant Mortality

Rebecca J. Burke, MD, PhD, FAAP, FACMG  
Assistant Professor, Department of Pediatrics  
Divisions of Neonatology and Medical Genetics  
WVU School of Medicine  
Morgantown, WV

## Utilizing Infant and Maternal Mortality Review to Drive Policy

### Kathy G. Cummons, MSW, ACSW

Interim Director, Office of Epidemiology and Prevention Services  
Director, Division of Research, Evaluation, and Planning  
Office of Maternal Child and Family Health  
Department of Health and Human Resources  
Charleston, WV

4:30 pm

## Adjourn

5:15 pm

## AWHONN Virtual 5K Walk, Run, or Jog for Every Woman, Every Baby, During Perinatal Nurses Week

Celebrate Perinatal Nurses Week with a fun, healthy activity, and support nurses, moms, and families at the same time!

Meet outside at the hotel front entryway to join your colleagues in a 5K walk through beautiful Stonewall Resort in support of Perinatal Nurses Week.

Go to <https://my.awhonn.org/donate> to register and make a donation.

Healthier women, safer pregnancies, stronger babies and the best prepared nurses, that's what your tax-deductible gift to Every Woman, Every Baby helps make possible. Contributions support lifelong learning for nurses, research that leads to improving nursing practice and patient care, and education and activities that provide information and resources for women and their families.

7:00 pm  
Maple Terrace

## Reception

Join us on the Maple Terrace for a reception in an outdoor location!

7:30 pm  
Terrace Lawn

## Annual Awards Dinner

We invite you to gather in the tent on the Terrace Lawn for our Annual Awards Dinner.





# Friday, October 15, 2021

7:00 – 8:00 am  
Ballroom Foyer, Birch and Summersville Room

## Registration, Breakfast, and Vendor Exhibits

8:00 am  
Stonewall Ballroom

## Welcome

8:00 – 8:45 am

### Implicit Bias in Healthcare (Virtual)

This presentation will highlight hidden bias in maternity care and how those who care for childbearing women can recognize and critique systems that create biases.

#### Sascha James-Contarelli, DNP, CNM, LM, FACNM

Assistant Professor  
Chair, Graduate Entry Pre-specialty in Nursing Program  
Midwifery and Women's Health Nurse Practitioner Program  
Yale University School of Nursing  
Orange, CT

8:45 – 9:45 am

### Bleeding Disorders in Perinatal Care

#### Diagnostic Considerations for Bleeding Disorders Among Obstetric Patients

This presentation will describe bleeding disorder diversity, highlight diagnostic considerations relevant to obstetrics, and explore hemophilia carriers as having a bleeding disorder. Guideline-based recommendations for obstetric care will be discussed.

#### Samuel Merrill, MD, PhD

Assistant Professor  
Medical Director, WVU Hospitals Hemophilia Treatment Center  
Section of Hematology/Oncology  
Director, Benign Hematology Clinic  
WVU Cancer Institute  
Morgantown, WV

### Prenatal and Intrapartum Management of Patients with Bleeding Disorder History

This presentation will review current prenatal screening options and appropriate counseling for method of delivery, including maternal and fetal risks. Modifications to intrapartum management to minimize maternal and neonatal morbidity will be explored.

#### Laura Merrill, MD, MA

Assistant Professor  
Department of Obstetrics and Gynecology  
WVU School of Medicine  
Morgantown, WV

9:45 – 10:15 am

Ballroom Foyer, Birch and Summersville Room

### Refreshment Break, Exhibit Visitation and Networking

10:15 – 10:45 am

Stonewall Ballroom

### Alliance for Innovation on Maternal Health (AIM): WV's Patient Safety Bundle Implementation

The state AIM co-chairs will review current data on severe maternal morbidity in WV. A review of implementation of the patient safety bundles, OB Hemorrhage and Severe Hypertension in Pregnancy will be illustrated through the Readiness, Recognition, Response and Reporting format.

#### Shon Rowan, MD

Vice Chair, WV ACOG  
Associate Professor and Quality Improvement and Patient Safety Director  
WVU School of Medicine  
Morgantown, WV

#### Melanie Riley, MSN, RN

Nurse Coordinator  
WV Perinatal Partnership  
Huntington, WV

10:45 - 11:15 am

## An Innovative Approach for the Treatment of Chronic Hypertension In Pregnancy

Balancing continuation of pregnancy with premature delivery is a challenge when managing hypertension in the pregnant mother. This presentation will highlight a new approach utilizing impedance cardiography to improve maternal and fetal outcomes.

**Jesse N. Cottrell, MD, FACOG**

Assistant Professor  
Maternal-Fetal Medicine  
Department of Obstetrics and Gynecology  
Joan C. Edwards School of Medicine, Marshall University  
Huntington, WV

11:15 am - 12:00 pm

## Implementation Strategies for the AIM Severe Hypertension in Pregnancy Bundle

This session will review practical implementation of the AIM severe hypertension in pregnancy bundle. This includes proper blood pressure assessment, system-level response to severe range blood pressures, data tools and review of outcomes (successes and near misses). There will be a focus on a variety of approaches hospitals can take due to their unique differences and resources.

**Arthur Ollendorff, MD**

Maternal Project Lead  
Perinatal Quality Collaborative of North Carolina  
Clinical Professor Department of Obstetrics and Gynecology  
University of North Carolina  
MAHEC OB/GYN Specialists  
Carilion Clinic  
Roanoke, VA

12:00 – 1:00 pm  
Terrace Lawn

## Lunch

Lunch will be served under the tent on the Terrace Lawn

1:00 – 2:00 pm

## The Neuroscience of Nurture in the NICU

This presentation will describe the neuroscience behind parent-infant bonding and attachment and the neurobiology of skin-to-skin contact as a modality for nurturing babies in the NICU. Ways to communicate with NICU babies in a manner that enhances bonding and attachment and promotes the development of trust will be discussed.

**Raylene Phillips, MD, MA, FAAP, FABM, IBCLC**

Association for Prenatal & Perinatal Psychology & Health  
President  
Medical Director, Neonatal Services  
Pediatric Department Chair  
Neonatology Attending, Associate Professor of Pediatrics  
Loma Linda University Medical Center - Murrieta  
Director, Breastfeeding/Lactation  
Loma Linda University Children's Hospital  
Loma Linda, CA

2:00 – 3:30 pm

## Obstetric and Pediatric Spotlights: Innovations to Improve Care

### Surgical Treatment of Critical Congenital Heart Disease: Hypoplastic Left Heart Syndrome (HLHS) (Virtual)

This presentation will review the care of pediatric patients with CCHD in WV. Current care for the single ventricle cardiac lesion HLHS will be discussed.

**Christopher E. Mascio, MD**

Professor and Chief, Division of Pediatric Cardiothoracic Surgery  
Department of Cardiovascular and Thoracic Surgery  
Executive Director, WVU Children's Heart Institute  
WVU School of Medicine  
Morgantown, WV

### WV Health Equity and Telehealth: Improving Birth Outcomes with an Evidence-Based Perinatal Tobacco Cessation Program (Virtual)

**Laurie Adams, TTS**

Executive Director  
BABY & ME – Tobacco Free Program™  
Jamestown, NY

**Perinatal Outcomes for Women Referred to WVU's Assist, Connect, and Encourage (ACE) – a program of the WV Drug Free Moms and Babies Project**

**Omar Duenas, MD, MPH, MS**

Associate Professor  
Department of Obstetrics and Gynecology  
WVU School of Medicine  
Morgantown, WV

**Finding Opportunities for Contraceptive Counseling: Addressing Family Planning During Prolonged Inpatient Stays**

**Sarah Dotson, MD, MPH**

Assistant Professor  
Medical Director for Performance Improvement & Quality  
Director, Improvement and Patient Safety  
WVU School of Medicine  
Morgantown, WV

3:30 pm

**Perinatal Summit Wrap Up, Evaluation and Adjournment**



# 2021

West Virginia  
Perinatal Summit

## PRESENTERS



### **WV Health Equity and Telehealth: Improving Birth Outcomes with an Evidence-Based Perinatal Tobacco Cessation Program (Virtual)**

**Laurie Adams**, TTS is the Founder and Executive Director for the BABY & ME - Tobacco Free Program. She has 25 years experience in tobacco cessation work. As a Tobacco Treatment Specialist and under her direction, BMTFP has been implemented nationwide in 21 states and is established as an evidenced-based perinatal/postpartum tobacco cessation program. BMTFP has been published in three national journals as an effective way to reduce tobacco use and improve birth outcomes. As of 2021, the program is now offered in WV as a telehealth program, serving any pregnant tobacco user in WV. Previous to her current role, Laurie worked 15 years as a program manager for the NY State Tobacco Control Program, assisting in clean-indoor and outdoor air policies.



### **Infant & Maternal Mortality Impact: A Dive into the Data**

**James Marcus Arnaez**, MPH, PhD has served as the lead epidemiologist for the West Virginia Health Statistics Center since early 2019. In this role, he is responsible for ensuring accurate statistics are provided to state partners. He has presented data on the health of West Virginia at multiple national conferences. During the pandemic, he has helped to address the impact of COVID-19 on minorities as a member of the COVID-19 Minority Task Force.



### **The Impact of Emerging Infections on Women and Infants in WV**

**Amy D. Atkins**, MPA is the Deputy Commissioner of Health Improvement for the Bureau for Public Health, WV Department of Health and Human Resources. Prior to this role she served as the Director of the Office of Epidemiology and Prevention Services, which included management of the state health response to the Cabell County HIV outbreak and the COVID-19 pandemic. She has also served as the Director of the Center for Local Health providing statewide oversight for the provision of infectious disease programs, environmental health services, and community health assessment and planning programs as the state health department liaison to local health departments. In her position she plays an active role in public health emergency preparedness and response.



### Relationships Between Maternal and Infant Outcomes

**Annelee Boyle, MD, FACOG** is an Associate Professor at the West Virginia University School of Medicine, Department of Obstetrics and Gynecology. She serves as the Medical Director of Labor and Delivery and Maternal-Fetal Medicine Services and is the Associate Residency Program director. Dr. Boyle grew up in Morgantown and graduated from West Virginia University. She received a medical degree from Wake Forest University School of Medicine before completing a Residency in Obstetrics and Gynecology at the Western Pennsylvania Hospital (now the West Penn Allegheny Health System) and a Fellowship in Maternal-Fetal Medicine at MedStar Washington Hospital Center and Georgetown University.



### Impact of Congenital Anomalies and Genetic Defects on Infant Mortality

**Rebecca J. Burke, MD, PhD, FAAP, FACMG** is an Assistant Professor of Pediatrics with the Divisions of Neonatal-Perinatal Medicine and Medical Genetics at West Virginia University School of Medicine. She received her medical and graduate degrees from the University of Arkansas for Medical Sciences in Little Rock, Arkansas. She completed her Medical Residency in General Pediatrics at Thomas Jefferson University/A.I. DuPont Hospital for Children in Wilmington, DE where she fell in love with caring for fragile neonates and children with rare genetic disorders. She was inspired to complete a dual Fellowship program in Neonatal-Perinatal Medicine and Clinical Genetics and Genomics at Baylor College of Medicine/Texas Children's Hospital in Houston, TX. Dr. Burke is a passionate advocate for children with complex medical conditions and their families. In addition to her Neonatology practice, she participates in various multidisciplinary specialty clinics including Cleft Palate Clinic and Craniofacial Clinic as well as providing prenatal Neonatology and Genetics consultation for Fetal Center patients at West Virginia University.



### An Innovative Approach for the Treatment of Chronic Hypertension in Pregnancy

**Jesse Cottrell, MD** is a clinician-scientist in the field of Maternal-Fetal Medicine at Marshall University. His specific area of interest involves the hypertensive disorders of pregnancy. During his residency at Marshall University, he utilized impedance cardiography to improve maternal and fetal outcomes for hypertensive pregnant patients. During Dr. Cottrell's three-year Maternal-Fetal Medicine fellowship at the University of Mississippi Medical Center, he was able to work on a research model of preeclampsia.



### Utilizing Infant and Maternal Mortality Review to Drive Policy

**Kathy Cummons, MSW, ACSW** has 21 years of public health experience in WV. Ms. Cummons is the Acting Director of the Office of Epidemiology and Prevention Services within the Bureau for Public Health, Department of Health and Human Resources. She also serves as the Director of the Division of Research, Evaluation, and Planning within the Office of Maternal, Child and Family Health. Prior to her public health experience, she worked 10 years at Charleston Area Medical Center as a social worker and then as Director of Social Services. Previously, Ms. Cummons was director of a foster care agency serving children and also worked with delinquent and emotionally disturbed youth in a group home setting. She coordinates and chairs the Newborn Screening Advisory Committee and the Infant and Maternal Mortality Review Panel. Ms. Cummons is a graduate of West Virginia University with a Master of Science in Social Work.





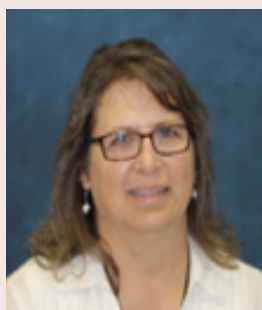
### **Finding Opportunities for Contraceptive Counseling: Addressing Family Planning During Prolonged Inpatient Stays**

**Sarah Dotson, MD, MPH** is an Assistant Professor of Obstetrics & Gynecology at West Virginia University in Morgantown, WV. She was born and raised in rural Western Maryland, with many generations of family hailing from Pleasants County, WV. She obtained her BA in Biochemistry from Colgate University, MD/MPH from Dartmouth Medical School, and completed OB/GYN residency at Duke University Hospital. She practices clinical Obstetrics & Gynecology as well as serves as the Medical Director for Quality & Patient Safety for the Department of OB/GYN. Her research interests include Quality Improvement and Family Planning. She has been a member of the WV LARC Workgroup since 2017. She is married and enjoys outdoor activities with her husband Josh, 3 stepsons and their 16-month old son.



### **Perinatal Outcomes for Women Referred to WVU's Assist, Connect, and Encourage (ACE) - a program of the WV Drug Free Moms and Babies Project**

**Omar Duenas, MD, MPH, MS** earned his medical degree from the Benemerita Universidad Autonoma de Puebla and his Doctor of Medicine at Universidad Nacional Autonoma de Mexico. For both degrees, he graduated as valedictorian. Dr. Duenas completed his residency in obstetrics and gynecology at Bronx Lebanon Hospital - Albert Einstein College of Medicine. During his last year of residency, he served as administrative chief resident. Dr. Duenas completed a fellowship in Female Pelvic Medicine at UMass Memorial Center - University of Massachusetts, where he also obtained a master's degree in public health. He is an Associate Professor in Obstetrics and Gynecology at West Virginia University School of Medicine. He practices general obstetrics and gynecology and specializes in treatment of different pelvic floor disorders. Dr. Duenas is double board-certified in Obstetrics & Gynecology and Female Pelvic Medicine and Reconstructive Surgery. His areas of research include surgical outcomes in pelvic surgery, neuro-urology, and perinatal outcomes in marginalized populations.



### **Perinatal State of the State – How are We Doing in WV?**

**Kimberly Farry, MD** has been in practice as a physician in Buckhannon, WV, since 1996, and has worked as both a hospital-employed physician at St. Joseph's Hospital as well as in private practice. After graduating from Davis & Elkins College with a Bachelor of Science in 1985, Dr. Farry attended Temple University School of Medicine, receiving her Master of Science in 1987 and her Doctor of Medicine in 1991. In addition to her association with St. Joseph's Hospital, Dr. Farry's professional affiliations include staff physician at Stonewall Jackson Memorial Hospital, clinical professor at West Virginia University Hospital, Fellow of the American College of Obstetrics and Gynecology, and a member of the Central West Virginia Medical Society and West Virginia State Medical Association. She currently serves as the Board President of the WV Perinatal Partnership and is involved in many outreach activities that promote the health of mothers and babies throughout WV. Dr. Farry also serves as the Chair of the Central Advisory Council of the WV Perinatal Partnership.



### **Impact of COVID-19 on Infants and Leading Causes of Maternal and Infant Mortality and Racial Disparities**

**Balaji Govidaswami, MD, MPH** is an internationally renowned physician and public health champion, committed to a variety of health and social causes for women and children. He has influenced a generation of trainees in medicine, nursing, and public health. Dr. Govidaswami is a graduate of the University of Alabama and attended the College of Medicine, University of Lagos. He completed his residency at the University of Kentucky and his fellowship at the University of California, San Diego in Extracorporeal Membrane Oxygenation (ECMO). He is the chief of the Division of Neonatology, the director of the Neonatal Intensive Care, the Chair of the Pediatric Preventative and Addiction Medicine, and an associate professor for Clinical and Translational Science at Marshall University. Dr. Govidaswami returned to Appalachia after 30 years in California and lives in the southeast hills of Huntington, WV.



### **Implicit Bias in Healthcare (Virtual)**

**Sascha James-Conterelli, DNP, CNM, FACNM** is an assistant professor at Yale School of Nursing and Chair of the Graduate Entry Preprofessional Nursing (GEPN) Program. She practices clinically as a member of the Yale Midwives. She received her bachelor's in nursing from Howard University, her masters in midwifery and doctorate degrees from New York University. She recently served as the first Black President of the New York State Association of Licensed Midwives (NYSALM). She is honored to have ongoing opportunities to provide her knowledge and expertise to many national efforts such as the American College of Nurse-Midwives, Midwives of Color Committee, and she is the foundation secretary and regional governor of the fellows of American College of Nurse-Midwives. She served on the CDC-MMRIA (Maternal Mortality Review Information Application) Bias Workgroup. She is proud to be a member of the New York State Perinatal Redesignation Taskforce and co-chair of the New York Governor's Maternal Mortality/ Racial Disparities Task Force. She is a member of New York State Maternal Mortality Steering Committee, Postpartum Workgroup, Maternal Mortality Review Board, and New York State Birth Equity Improvement Project. Most recently, she worked on the New York Governor's COVID-19 Maternity Taskforce. As a proud West-Indian, she is dedicated to assisting the perinatal communities of her home including the Virgin Islands and Puerto Rico.



### **Drug Free Moms and Babies Project Update (Virtual)**

**Christa Lilly, PhD** is an Associate Professor in the Department of Biostatistics in the School of Public Health at West Virginia University where she enjoys teaching introductory biostatistics and multivariate analysis. Previously, Dr. Lilly was a Research Assistant Professor in the Department of Pediatrics in West Virginia University School of Medicine where she worked as the biostatistician of the Coronary Artery Risk Detection in Appalachian Communities (CARDIAC) project. Dr. Lilly received her PhD in Psychology with emphasis in both Developmental and Quantitative Psychology from Vanderbilt University. She has experience working with parent-child interactions as they relate to child achievement and health outcomes, and has applied statistical interests in factor analysis, structural equation modeling, and psychometrics. Dr. Lilly maintains a strong record of scholarship resulting in many conference presentations to date. She has co-authored published articles in *Pediatrics*, *American Journal of Respiratory and Critical Care Medicine*, and *Archives of Internal Medicine*, in addition to first author publications in other pediatric, obesity, and psychology and education journals.



### **Marijuana: Effects on the Fetus and Newborn (Virtual)**

**Gilbert Martin, MD, FAAP** is Director Emeritus of the Neonatal Intensive Care Unit at Emanate Health, Queen of the Valley Hospital and has been on the faculty since 1972. He is a Professor of Pediatrics at Loma Linda University, Loma Linda, California. He is Editor Emeritus of the *Journal of Perinatology*. Dr. Martin is a past member of the Executive Committee of the Perinatal Section of the American Academy of Pediatrics, a past member of the Committee of the Fetus and Newborn, and a member of the Coder's Committee of the Perinatal Section. He is past president of the California Perinatal Association and a member of the California Association of Neonatologists. He is the author of several books and treatises.



### **Surgical Treatment of Critical Congenital Heart Disease: Hypoplastic Left Heart Syndrome (HLHS) (Virtual)**

**Christopher E. Mascio, MD** joined the West Virginia University Medicine Children's Heart Center in May of 2021. It is a homecoming of sorts as he grew up in the northern panhandle of the state. He comes to Morgantown from Philadelphia where he performed the full range of congenital heart operations on neonates, infants, children, and adults with congenital heart disease at the Children's Hospital of Philadelphia (CHOP). He was also associate clinical chief of CHOP's Division of Pediatric Cardiothoracic Surgery. Dr. Mascio serves as the Executive Director of the West Virginia University Medicine Children's Heart Center, where he works alongside a focused group of nurses, anesthesiologists, intensivists, and cardiologists that are dedicated to caring for children born with congenital heart disease.



### **ESC at CAMC –The Eat, Sleep, and Console Approach to Care**

**Stefan R. Maxwell, MD, FAAP** has served the mothers and babies at Charleston Area Medical Center Women and Children's Hospital as Chief of Pediatrics for twenty years and Medical Director of the NICU for over 30 years. He is certified in Neonatal - Perinatal Medicine and is a Fellow of the American Academy of Pediatrics. Dr. Maxwell has served on the WV Perinatal Partnership Central Advisory Council since 2006, providing leadership as Chair of the Central Advisory Council from 2013 to 2017 and Chair of the Committee on Substance Use During Pregnancy for over 15 years. He was a member of the previous Governor's Advisory Council on Substance Abuse, and he was recently appointed Chair of the Sub-committee for Pregnant and Parenting Women of the Governor's Committee on Substance Abuse Prevention and Treatment. He has provided expert testimony to the US Congress as well as to the WV state legislature. His commitment and leadership have been important to the Partnership's successes in improving care of mothers and babies.





### The Impact of Emerging Infections on Mothers and Infants

**Shannon McBee**, MPH, CHES is the State Epidemiologist for WV's Bureau for Public Health. Ms. McBee has worked as an infectious disease epidemiologist for over 14 years. During her career she has had the opportunity to be the lead epidemiologist in the statewide outbreak response for acute hepatitis A, enterovirus D68, e-cigarette or vaping use-associated lung injury, and has coordinated the quadrennial epidemiological response for the National Scout Jamboree in WV. She currently serves as the epidemiological branch lead for the 2019 Novel Coronavirus Disease (COVID-19) response efforts for the Office of Epidemiology and Prevention Services (OEPS). Previous positions held within the Bureau include the Outbreak Epidemiologist, Syndromic Surveillance Director, and Statewide Influenza Coordinator. Prior to joining OEPS Shannon served as the technical expert in the field of epidemiology for the Bureau for Behavioral Health. She led the work of the Statewide Epidemiological Outcomes Workgroup (SEOW) and was responsible for providing surveillance support to the Bureau around substance use. Ms. McBee has a Bachelor of Science and Arts degree in Environmental Protection and a master's degree in Public Health from West Virginia University and is a Certified Health Educator Specialist (CHES). Prior to returning to West Virginia in 2010, she worked for the Virginia Department of Health as a District Epidemiologist.



### Prenatal and Intrapartum Management of Patients with Bleeding Disorder History

**Laura Merrill**, MD, MA attended medical school at Washington University in St. Louis where she also completed a Master's degree in Biology and Biomedical Sciences. She completed a residency at the University of Vermont Medical Center in Burlington, VT. She began her post-residency career as General OB/GYN faculty at the Johns Hopkins Hospital. Two years ago, she relocated to Morgantown, and often shares patients with her husband's Hematology practice, to provide more comprehensive women's care to patients with bleeding and clotting concerns throughout their reproductive lifespan. Dr. Merrill is an Assistant Professor in the Department of Obstetrics and Gynecology at West Virginia University School of Medicine.



### Diagnostic Considerations for Bleeding Disorders Among Obstetric Patients

**Samuel Merrill**, MD, PhD is a board-certified benign hematologist who treats patients with bleeding and thrombotic disorders, as well as other non-malignant hematologic conditions. Dr. Merrill completed his training in benign hematology at Johns Hopkins, where he was on faculty before coming to West Virginia to direct the West Virginia University Hospitals Hemophilia Treatment Center (HTC). As HTC director, he has introduced many care and quality improvement initiatives for patients with bleeding disorders, including reducing acute hospitalizations for bleeding, improving access to care, and raising awareness of care required for women who are hemophilia carriers. He is an Assistant Professor of Hematology and Oncology at West Virginia University School of Medicine.



### **Implementation Strategies for the AIM Severe Hypertension in Pregnancy Bundle**

**Arthur Ollendorff, MD** completed medical school and his OB/GYN residency at Northwestern University Medical School. His initial academic focus was introducing evidence-based medicine into the undergraduate and graduate medical education curricula. This grew into a focus on quality improvement and led to an appointment as maternal health committee co-chair to the Ohio Governor's Infant Mortality Task Force. After relocating to Asheville, North Carolina, Dr. Ollendorff served as the physician champion for western North Carolina for Medicaid Pregnancy Medical Home Program, the clinical lead for maternal projects for the Perinatal Quality Collaborative of North Carolina (PQCNC), the state coordinator for the North Carolina AIM program, and the North Carolina Maternal Mortality Review Committee. He recently moved to Roanoke, VA to become the leader of graduate medical education programs at Carilion Clinic.



### **The Sacred Hour: Uninterrupted Skin to Skin Immediately After Birth and The Neuroscience of Nurture in the NICU**

**Raylene M. Phillips, MD, MA, FAAP, FABM, IBCLC** received a master's degree in Developmental Psychology, became NIDCAP certified as an Infant Developmental Specialist, and then attended medical school at University of California, Davis. She completed her pediatric residency and neonatology fellowship at Loma Linda University Children's Hospital in Southern California where she is currently an attending neonatologist in the Level 4 NICU. She also is the Pediatric Department Chair and Medical Director of Neonatal Services at Loma Linda University Medical Center-Murrieta. Dr. Phillips is an International Board-Certified Lactation Consultant, a Fellow of the Academy of Breastfeeding Medicine, and a past president of the National Perinatal Association (NPA). She is currently President of the Association for Prenatal and Perinatal Psychology and Health (APPPAH). Her passion is to honor and nurture the earliest connections between babies and their parents.



### **Alliance for Innovation in Maternal Health (AIM): West Virginia's Patient Safety Bundle Implementation**

**Melanie Riley, MSN, RN** is a registered nurse with over 30 years of experience in women's health. Graduating from West Virginia University with a BSN, she started working in gynecology and oncology at West Virginia University Hospital. Later, transitioning to obstetrical care, she worked as a labor and delivery, postpartum, and nursery staff nurse at City Hospital in Martinsburg, WV. She served as the Director of Women and Infants' services and helped establish the level II NICU at Berkeley Medical Center. She obtained her Masters in Nursing from Walden University. Currently, she serves as the Nurse Coordinator for the WV Perinatal Partnership where she teaches intermediate fetal monitoring, coordinates various performance improvement projects, and is the state AIM Coordinator for implementation of the OB Patient Safety Bundles.



### **Alliance for Innovation in Maternal Health (AIM): West Virginia's Patient Safety Bundle Implementation**

**Shon Rowan, MD** graduated from West Virginia University School of Medicine where he also completed a residency in Obstetrics and Gynecology. Currently, Dr. Rowan is an Associate Professor in OB/GYN at West Virginia University School of Medicine. His practice focuses on infertility as well as robotic surgery. He has served as Program Director as well as the Medical Director for Quality Improvement. Dr. Rowan is active in the WV Perinatal Partnership and has led a project on OB Safety in Rural Emergency Departments. He is currently WV Section Vice Chair for American College of Obstetricians and Gynecologists. He lives in Morgantown with his wife Michelle and their three children.



### **Improving Access to Doula Care**

**Ngozi Doreen D. Tibbs, MPH, LCCE, IBCLC, CHC, PN1, LU** is a nationally recognized speaker and educator on cultural humility, diversity, childbirth education, lactation, and health equity. She has a bachelor's degree in Maternal Child Health and a master's degree in Public Health. In addition, Ngozi is a Certified Childbirth Trainer and Educator through Lamaze International (LCCE), an International Board-Certified Lactation Consultant (IBCLC) plus Co-Founder of The Pittsburgh Black Breastfeeding Circle (PBBC) and the new awesome, 45-hour foundational training, The Black Course. Ngozi attended her first birth in 1999 and knew from that day that she had found her calling. Often known to share her wonderful personal birth stories (including her fifth child's birth in the car), she believes the best way to approach birth and breastfeeding is through informed eyes with lots of support and humor. Ngozi loves learning and always looks for ways to expand her expertise. She holds evidence-based certifications in Health and Nutrition from Precision Nutrition and the American Council on Exercise. She is proud to be a Loveologist, Master Sexpert, and Relationship Coach through Loveology University. Ngozi has been married to her college sweetheart for the past 30 years, and they are the parents to five awesome children and one fantastic grandson.



### **Welcome Remarks**

**Amy N. Tolliver, MS** is the Executive Director of the WV Perinatal Partnership. She came to the position in 2013 with a passion for women's health and reproductive equity and extensive experience in state and federal health policy development including legislative and regulatory policy. Ms. Tolliver served as the Government Relations Director and Director of the Political Action Committee for the West Virginia State Medical Association for 17 years. During her earlier career, Ms. Tolliver also served as Budget Analyst for the West Virginia House of Delegates Finance Committee and as Program Coordinator for the West Virginia Child Care Association. She received a bachelor in Business Administration and Master of Business and Industrial Relations from Marshall University. Ms. Tolliver resides in Charleston with her husband Scott and two wonderful children, Emma and Eli.



### **Infants with Prenatal Substance Use Exposure and Neonatal Abstinence Syndrome (NAS) – Updates and Trends from 2016 – 2021 (Virtual)**

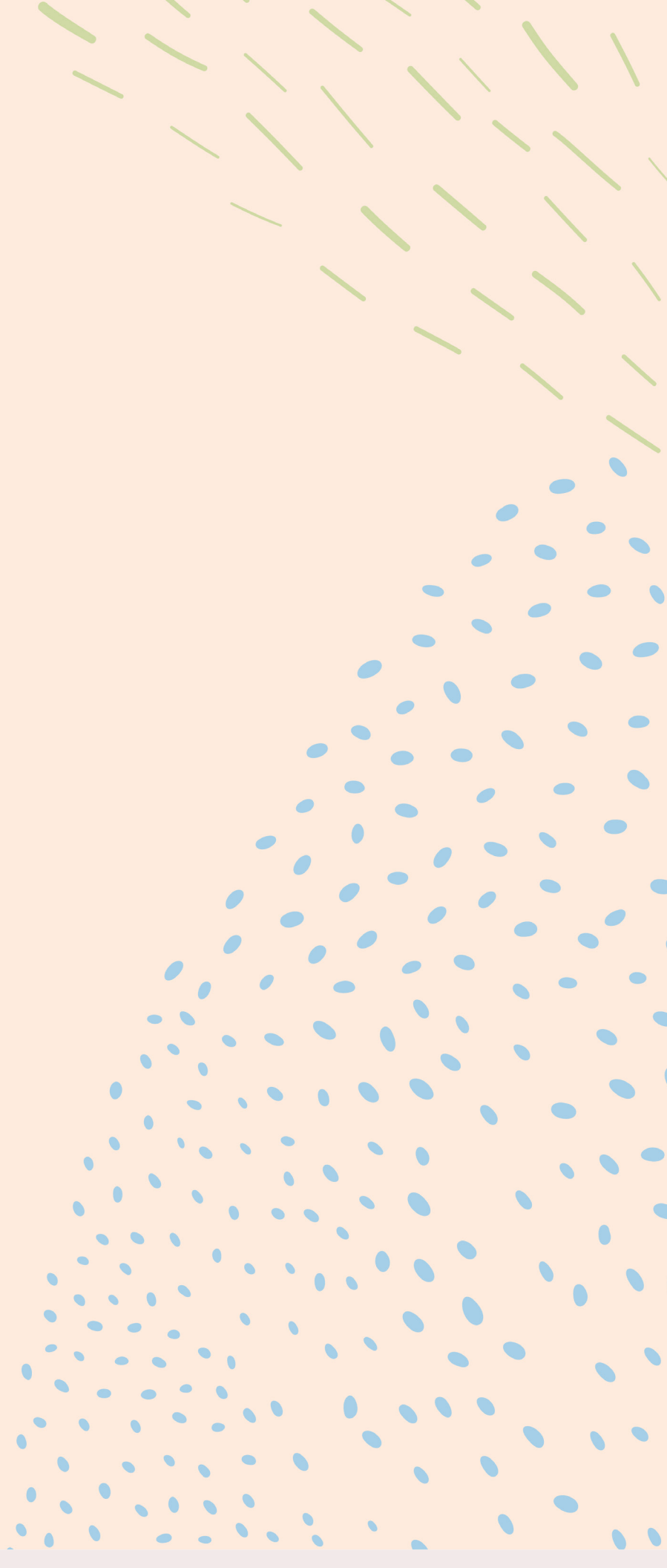
**Amna Umer**, PhD, MPH, BDS, is an Associate Professor in the Department of Pediatrics, School of Medicine at West Virginia University. She earned her master's degree in public health from Northeastern University in Boston and her doctorate in Epidemiology from West Virginia University. Her main area of interest is maternal and child health. She joined the West Virginia Project WATCH team in 2014 and has worked on numerous projects using the Birth Score data. Her current work focuses on intrauterine substance exposure and infant outcomes.



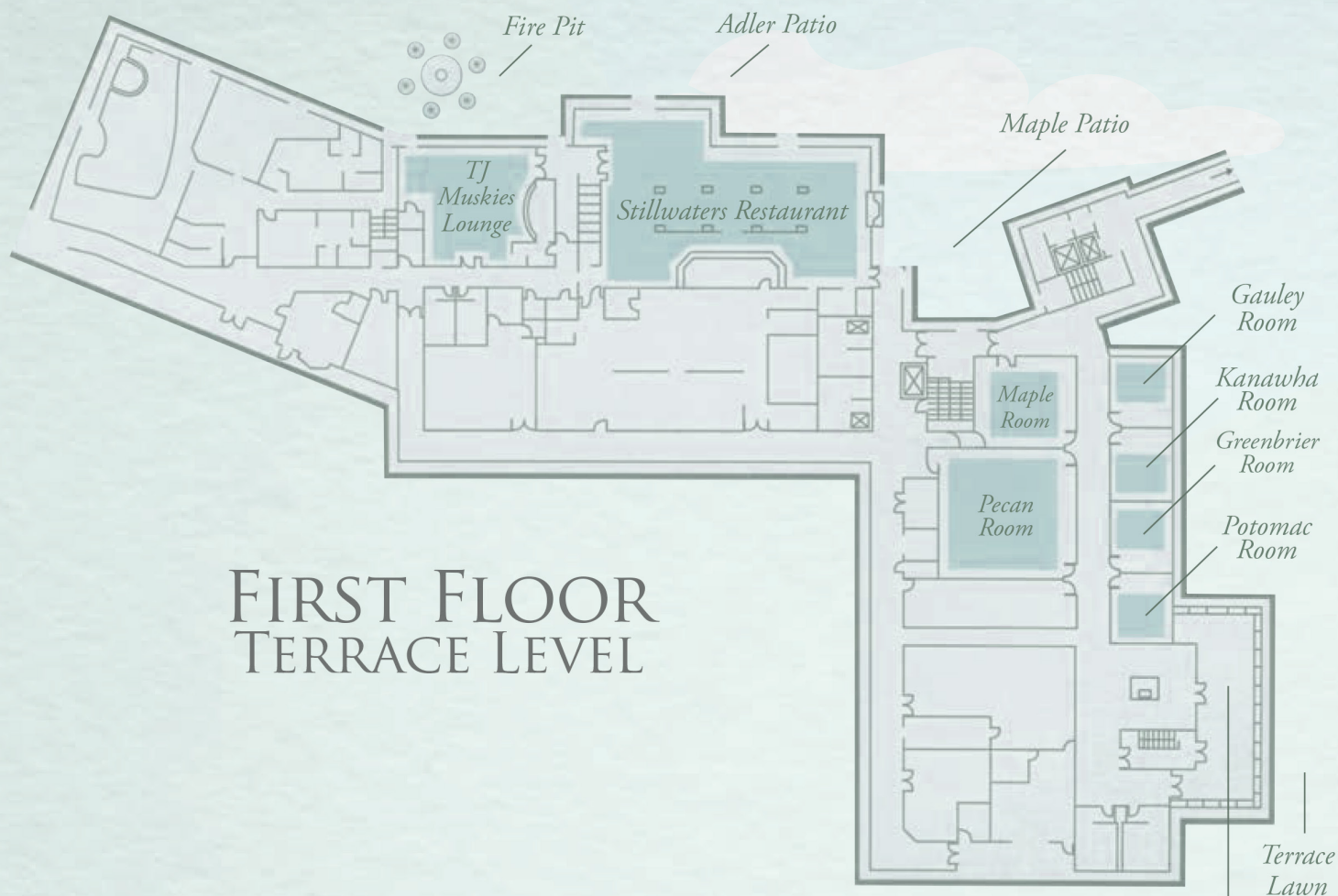
### **Infant and Maternal Mortality: Panel Discussion**

**Anne Williams**, RN, BSN, MS-HCA is a Nurse Consultant with the WV Perinatal Partnership. Anne has 35 years of experience in the healthcare field. A native West Virginian, Anne graduated from the West Virginia University School of Nursing with a Bachelor of Science in Nursing and Marshall University Graduate College with a Master of Science in Management/Healthcare Administration. She launched her career providing direct clinical care for 5 years as a Clinical Nurse in the Pediatric and Neonatal Intensive Care Units at Charleston Area Medical Center. That experience was followed by 27 years with the WV Department of Health and Human Resources, Bureau for Public Health. In her tenure with Public Health, Anne served as the Director, Family Planning Program; Director, Division of Perinatal and Women's Health; Director, Office of Maternal, Child and Family Health (OMCFH), and in late 2013, accepted the position of Deputy Commissioner for Health Improvement, Bureau for Public Health. As Deputy Commissioner, she provided leadership/oversight of statewide health policy and health systems transformation initiatives until her retirement in late 2018. In her public health career, Anne participated in numerous national, state and community level partnerships, collaborative workgroups, and advisory committees to stimulate, support, and implement investments in the delivery of quality healthcare and provide experienced leadership in health systems transformation in WV. In January 2019, Anne joined the WV Perinatal Partnership to provide case ascertainment of medical and social service information on pregnant women and their infants as liaison to the WV Infant and Maternal Mortality Review Panel. This initiative helps OMCFH fulfill strategies and activities aimed at accurately counting and characterizing infant and maternal deaths, a process vital to understanding infant and maternal mortality during pregnancy, childbirth, and the year postpartum.

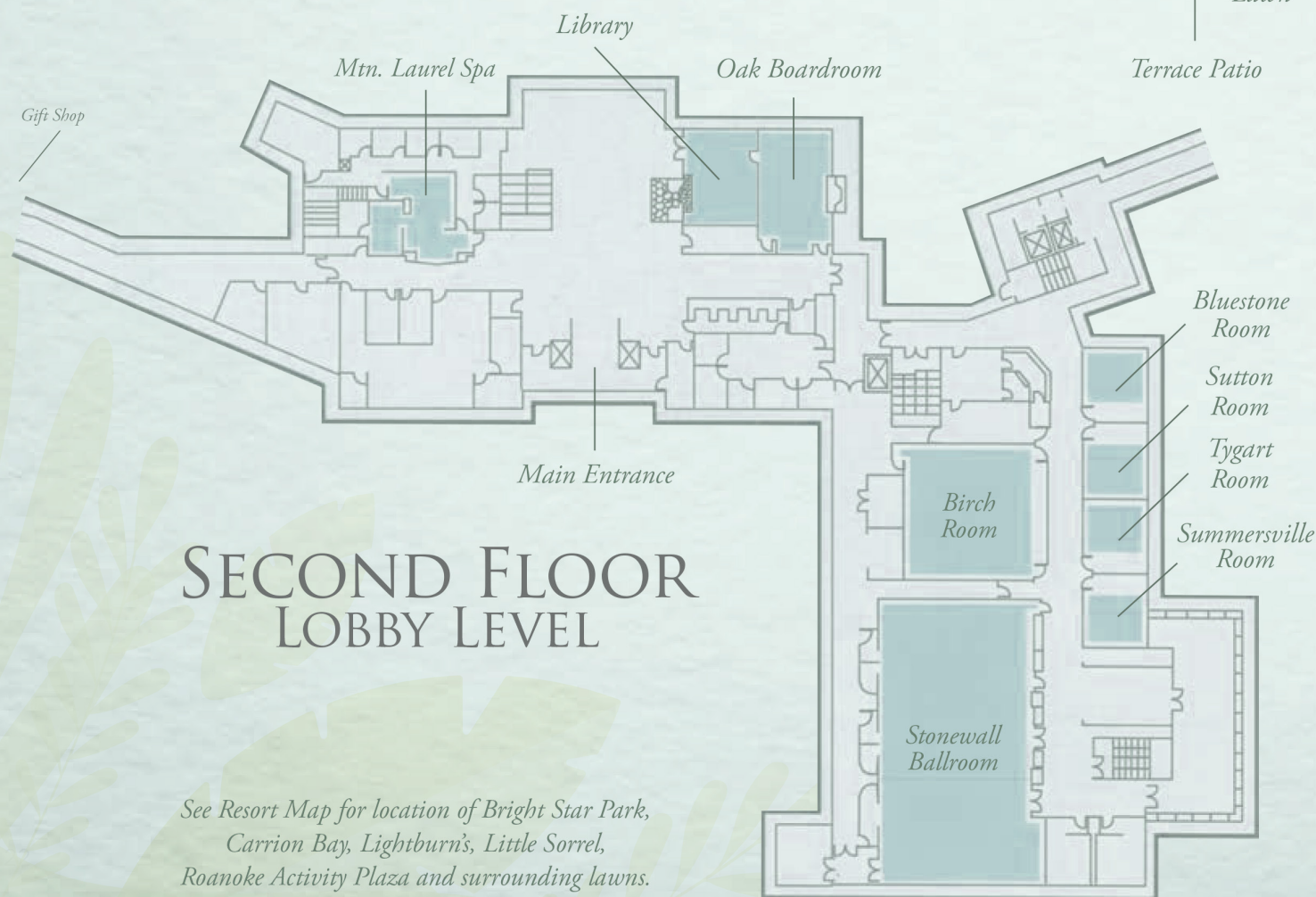
# NOTES







## FIRST FLOOR TERRACE LEVEL



## SECOND FLOOR LOBBY LEVEL

See Resort Map for location of Bright Star Park,  
Carrion Bay, Lightburn's, Little Sorrel,  
Roanoke Activity Plaza and surrounding lawns.





WVPerinatal.org

**Working together for healthier  
mothers and babies.**

